

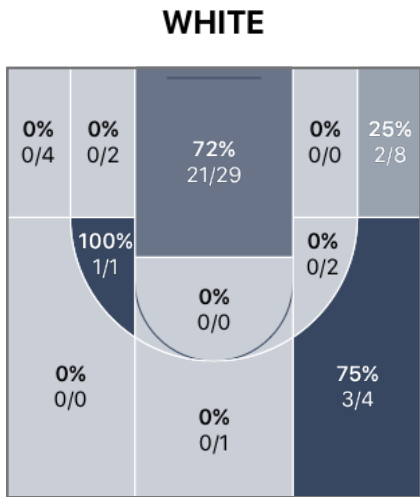
Covington 67 - 51 Delphi Community

Home

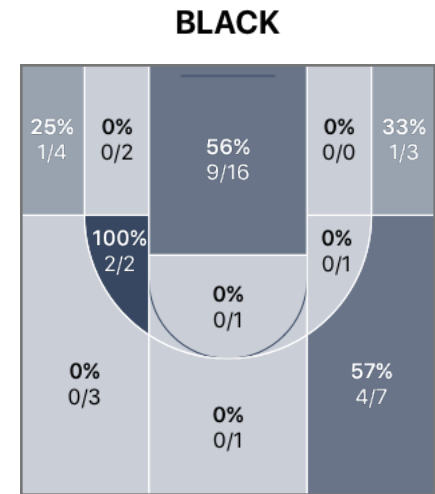
Non-League

Saturday, November 25, 2017

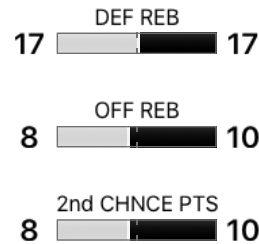
WHITE 67 **Game Over** **51** **BLACK**



	1	2	3	4
WHITE	12	16	17	22
BLACK	15	10	6	20



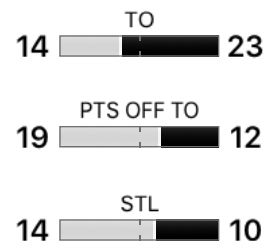
REBOUNDS



POINTS

WHITE	BLACK
53% FG%	43%
29% 3PT FG%	33%
80% FT%	61%
42 PTS IN PAINT	18

TURNOVERS




Team Totals

	FGM-A	3PM-A	FTM-A	PIP	OREB	DREB	REB	2CP	AST	STL	POT	BLK	TO	PF	PTS
COVINGTON	27-51	5-17	8-10	42	8	17	25	8	18	14	19	1	14	16	67
DELPHI COMMU...	17-40	6-18	11-18	18	10	17	27	10	6	10	12	1	23	13	51

FGM-A - Field Goal Makes/Attempts OREB - Offensive Rebounds AST - Assists TO - Turnovers
 3PM-A - 3 Point Makes/Attempts DREB - Defensive Rebounds STL - Steals PF - Personal & Technical Fouls
 FTM-A - Free Throw Makes/Attempts REB - Rebounds POT - Points off Turnovers PTS - Total Points
 PIP - Points in the Paint 2CP - 2nd Chance Points BLK - Blocks

Covington 67 - 51 Delphi Community

 Home

 Non-League

 Saturday, November 25, 2017

Covington Stats

PLAYERS	FGM-A	3PM-A	FTM-A	PIP	OREB	DREB	REB	2CP	AST	STL	POT	BLK	TO	PF	PTS
#20, S Pettit	9-14	3-5	1-2	12	0	2	2	2	2	2	3	0	4	4	22
#32, T Cates	3-5	0-0	4-4	6	4	1	5	4	1	2	4	1	2	2	10
#31, A Tanner	4-6	1-3	0-0	6	1	3	4	2	1	2	3	0	2	3	9
#3, C Brown	3-9	1-6	2-3	4	1	2	3	0	1	0	0	0	1	3	9
#10, T Bever	3-5	0-0	1-1	6	0	2	2	0	10	4	5	0	4	2	7
#15, D Keller	3-7	0-1	0-0	6	2	2	4	0	1	2	0	0	1	0	6
#11, A Kline	2-4	0-1	0-0	2	0	1	1	0	2	2	4	0	0	1	4
#12, E Engle	0-0	0-0	0-0	0	0	0	0	0	0	0	0	0	0	0	0
#4, K Fye	0-1	0-1	0-0	0	0	0	0	0	0	0	0	0	0	1	0
#21, L Pinkerton	0-0	0-0	0-0	0	0	0	0	0	0	0	0	0	0	0	0
#24, C Ellmore	0-0	0-0	0-0	0	0	0	0	0	0	0	0	0	0	0	0
#40, D Haymaker	0-0	0-0	0-0	0	0	0	0	0	0	0	0	0	0	0	0
Unassigned/Team	0-0	0-0	0-0	0	0	4	4	0	0	0	0	0	0	0	0
Total	27-51	5-17	8-10	42	8	17	25	8	18	14	19	1	14	16	67

FLAGRANT FOULS


COVINGTON None

TECHNICAL FOULS

COVINGTON None

Covington 67 - 51 Delphi Community

 Home

 Non-League

 Saturday, November 25, 2017

Delphi Community Stats

PLAYERS	FGM-A	3PM-A	FTM-A	PIP	OREB	DREB	REB	2CP	AST	STL	POT	BLK	TO	PF	PTS ▾
#3, C Murray	7-14	4-8	2-3	4	0	3	3	4	2	3	6	1	4	2	20
#22, B Carroll	3-4	0-0	4-8	6	2	6	8	2	0	2	3	0	2	3	10
#13, G Tomson	3-8	0-4	3-3	6	3	1	4	4	0	0	0	0	3	4	9
#11, S Waters	2-7	1-5	0-0	2	0	0	0	0	2	1	0	0	6	1	5
#31, Z Townsend	2-6	1-1	0-0	0	1	3	4	0	1	1	3	0	4	1	5
#12, E Hudson	0-0	0-0	2-4	0	0	2	2	0	1	2	0	0	3	2	2
#21, K Zimpfer	0-1	0-0	0-0	0	0	1	1	0	0	1	0	0	1	0	0
#5, K Lowry	0-0	0-0	0-0	0	0	0	0	0	0	0	0	0	0	0	0
#25, H Corbin	0-0	0-0	0-0	0	0	0	0	0	0	0	0	0	0	0	0
#50, J Beale	0-0	0-0	0-0	0	0	0	0	0	0	0	0	0	0	0	0
Unassigned/Team	0-0	0-0	0-0	0	4	1	5	0	0	0	0	0	0	0	0
Total	17-40	6-18	11-18	18	10	17	27	10	6	10	12	1	23	13	51

FLAGRANT FOULS

DELPHI COM... None

TECHNICAL FOULS

DELPHI COM... None